

Govt. Pt Shyamacharan Shukla College

(Shankar Nagar), Dharsiwa Raipur (C.G.)

Criterion - IV

4.1.1. The Institution has adequate infrastructure and other facilities for -

a. teaching – learning, viz., classrooms, laboratories, computing equipment etc

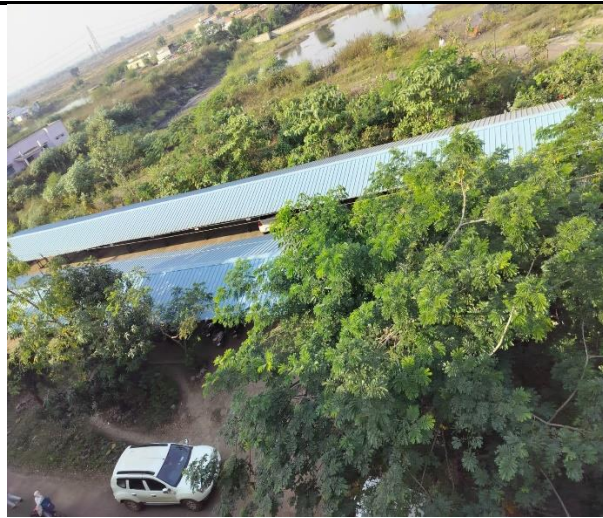
b. ICT – enabled facilities such as smart class, LMS etc.

Facilities for Cultural and sports activities, yoga centre, games (indoor and outdoor), Gymnasium, auditorium etc

Infrastructural Facilities

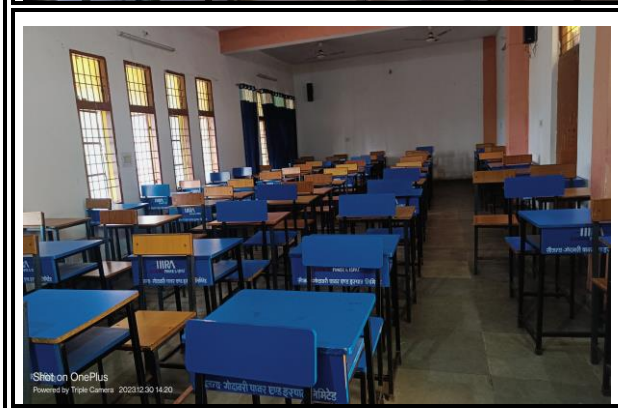
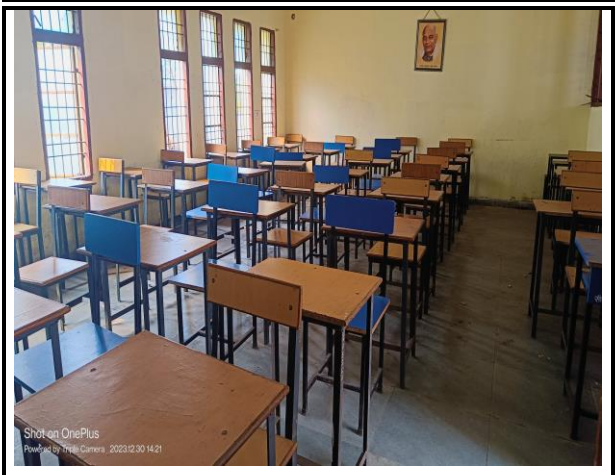
1.	Area of premises/campus	10 Acres
2.	Main Entrance Gate	02
3.	Front Garden with Flag post & Green Campus	-
4.	Parking and cycle stand	1 - 1
5.	Canteen	1
6.	Hostel for Girls (100 seater)	1
7.	Sports Ground	1
8.	Mini Pavilion	1
9.	College Building (with 40 rooms)	3 floored
10.	Assembly Space in between with a Stage	1
11.	Classrooms	19
12.	Laboratories	6
13.	Computer Lab.	1
14.	Library with reading room	1
15.	Smart class (equipped with smart board, projector, display, sound system.	2
16.	Girls Common Room (equipped with vending machine, dressing and rest space.	1
17.	NCC Room (for Girls)	1
18.	NSS Room	1
19.	Sports Room with indoor gym	1
20.	Seminar Hall (equipped with projector, a lectern with mic & sound system.	1
21.	Office with Store, Account Section, student section	2
22.	IQAC	1
23.	Principal Chamber (with 2 sections)	1
24.	Staff Room	1
25.	Departments	4
26.	Washrooms (For, Staff-3, Girls-2, Boys-3	8

College Premises/Campus



College Building

Class Rooms/Galery



College Building

Laboratories



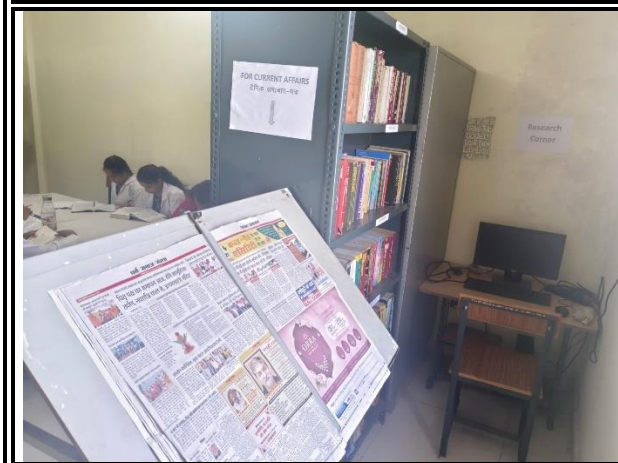
College Building

Computer Lab/ Smart Class/Seminar Hall



College Building

Library



College Building



Facilities for Cultural & Sports, Yoga activities



Yoga/ Indoor Gym /games



